

# Watlow CVC Control Package

---

The Watlow® CVC controller provides an economical solution for applications requiring simple on-off control. The CVC controller comes mounted in a square 1/8th DIN panel and provides significantly better performance, repeatability and accuracy over analog temperature controllers.

The CVC controller includes an operator interface for viewing and selecting the set point. A red, four-character seven segment LED displays the set point with a push to show process option. The set point selection is made with discrete up/down cursor keys.

- ❖ Microprocessor based, on-off control
- ❖ Nominal switching hysteresis, typically 1.7°C (3°F)
- ❖ Four digit LED display
- ❖ °F or °C LED indicator
- ❖ Load/Alarm LED indicator
- ❖ Agency approvals: CE; UL 873; UL 197; ANSI Z21.23; NEMA 4X/IP65
- ❖ Allowable Operating Range 0° - 999°F
- ❖ 8 A electric; life rated at 100,000 cycles
- ❖ 120V~(ac) +10%; -15%; 50/60Hz, ±5%
- ❖ Type K thermocouple



## Specifications

- ❖ Nema 4 Enclosure Screw cover, Dimensions TBD
- ❖ (1) CVCKKH-00002500D : Temperature controller
- ❖ 8 Amp mechanical relay output
- ❖ 120V output from Selector Switch
- ❖ (1) On/Off Selector Switch in cover
- ❖ (1) Terminal strip for customer hook up
- ❖ (s) Quencharcs for noise suppression
- ❖ (1) In-line control fuse/holder
- ❖ (3) 7/8" holes in enclosure for customer access
- ❖ System Drawings and User Manuals
- ❖ Wiring, fabrication and labeling

Charles A. Hones, Inc. — 607 Albany Avenue — Amityville, NY 11701 — 631.842.8886  
**charlesahones.com** info@charlesahones.com  
Ithaca, NY office — 222 South Albany Street — Ithaca, NY 14850 — 607.273.5720

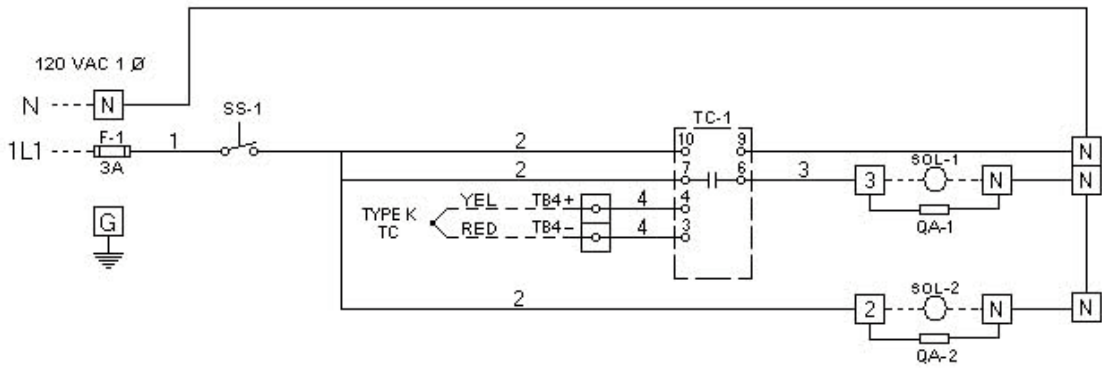
# CVC control wiring diagram

CHARLES A HONES INC 607 ALBANY AVENUE AMITYVILLE, NY 11701	CUSTOMER CHARLES A HONES INC TITLE 120 VAC 1 PHASE 3 AMP MAX TEMPERATURE CONTROL PANEL	REVISION / DATE AUG -14 - 2012 DRAWN BY DBM
DRAWING # DESIGN E REV-1		

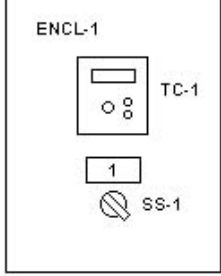
<b>WIRE IDENTIFICATION</b> WIRE L1: BLACK WIRE # 1: BLACK WIRE # 2: BLACK WIRE # 3: RED NEUTRAL: WHITE GROUND: GREEN
--

\_01  
 \_02  
 \_03  
 \_04  
 \_05  
 \_06  
 \_07  
 \_08  
 \_09  
 \_10  
 \_11  
 \_12  
 \_13  
 \_14  
 \_15  
 \_16  
 \_17  
 \_18  
 \_19  
 \_20  
 \_21  
 \_22  
 \_23  
 \_24  
 \_25  
 \_26  
 \_27  
 \_28  
 \_29  
 \_30  
 \_31  
 \_32  
 \_33  
 \_34  
 \_35  
 \_36  
 \_37  
 \_38  
 \_39  
 \_40  
 \_41  
 \_42  
 \_43  
 \_44  
 \_45  
 \_46  
 \_47  
 \_48

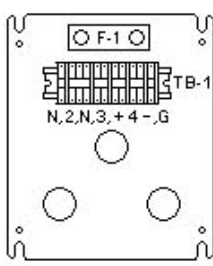
WIRING SCHEMATIC



EXTERIOR FRONT COMPONENT LAYOUT



INTERIOR SUB-PANEL COMPONENT LAYOUT



NAMEPLATE # 1 : " POWER - OFF / ON "

SYMBOL	DESCRIPTION	MANUFACTURER	PART #
ENCL-1	ENCLOSURE 8 X 6 X 4 / SUB PANEL	HAMMOND	PJ864R / 14R0705
F-1	3 AMP FUSE / HOLDER	BUSSMAN	S-8301-1 / GDL3 2/10
SS-1	2 POS SELECTOR SWITCH / ( 2 ) 1 NO CONTACT BLOCK	GENERAL ELECTRIC	P9CSVDON / P9B10VN
TB	TERMINAL BLOCK	ENTRELOC	VARIOUS
TC-1	TEMPERATURE CONTROL	WATLOW	CVCCKH00000999D
QA-1,2	QUENCHARC	WATLOW	0804-0147-0000