

Watlow EZ Express Control Package

The Watlow® EZ Express panel mount controller is an industry-leading PID controller that allows optimal performance utilizing simple control and menu functionality without complex features. Ideal for basic applications and usage levels, the EZ Express controller offers easy-to-use features for many heating applications. The controller includes one universal input and an option for up to two outputs and is available in a 1/16 DIN panel mount package.

- ❖ Agency approvals: UL® listed, CSA, CE, RoHS, FM
- ❖ Max output 15A
- ❖ Simplified menu
- ❖ PID auto-tune for fast, efficient start-up
- ❖ Complies with NEMA 4X
- ❖ Touch-safe wiring termination
- ❖ Industry leading service and support



Specifications

- ❖ Nema 4 Enclosure Screw cover, Dimensions TBD
- ❖ (1) PM6C1EA-AAAABAA : Temperature controller
- ❖ 5 Amp mechanical relay output #1
- ❖ 5 Amp mechanical relay output #2
- ❖ 120V output from Selector Switch
- ❖ (1) On/Off Selector Switch in cover
- ❖ (1) Terminal strip for customer hook up
- ❖ (2) Quencharcs for noise suppression
- ❖ (1) In-line control fuse/holder
- ❖ (3) 7/8" holes in enclosure for customer access
- ❖ System Drawings and User Manuals
- ❖ Wiring, fabrication and labeling

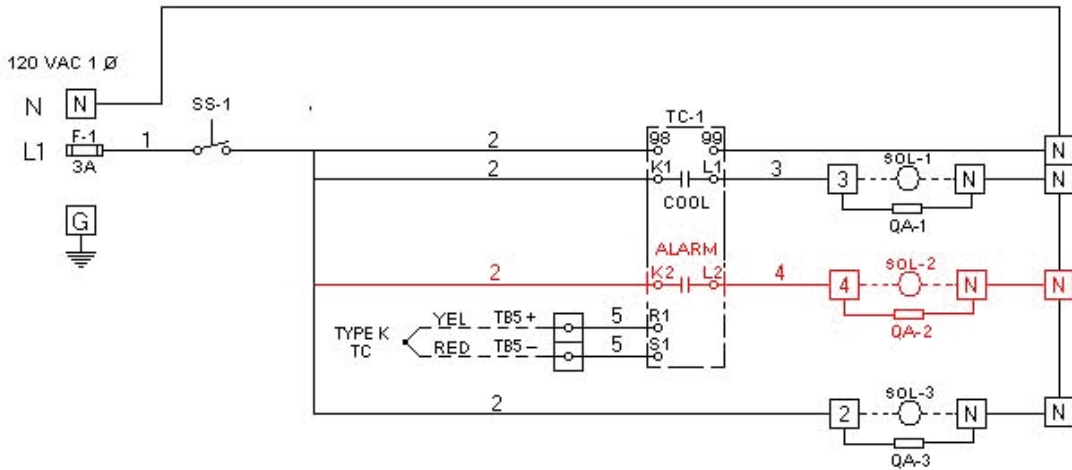
Charles A. Hones, Inc. — 607 Albany Avenue — Amityville, NY 11701 — 631.842.8886
charlesahones.com info@charlesahones.com
Ithaca, NY office — 222 South Albany Street — Ithaca, NY 14850 — 607.273.5720

EZ Express control wiring diagram

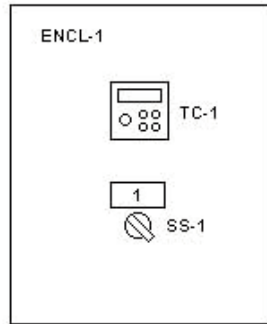
MCPEAK COMPANY INC 111 MONARCH DRIVE LIVERPOOL, NEW YORK 13088 TEL: 315-453-0500 FAX: 315-453-0117	CUSTOMER CHARLES A HONES TITLE 120 VAC 1 PHASE 3 AMP MAX TEMPERATURE CONTROL PANEL	REVISION / DATE OCT - 08 - 2012 DRAWN BY DBM
DRAWING # DESIGN B - REV 2		

.01
 .02
 .03
 .04
 .05
 .06
 .07
 .08
 .09
 .10
 .11
 .12
 .13
 .14
 .15
 .16
 .17
 .18
 .19
 .20
 .21
 .22
 .23
 .24
 .25
 .26
 .27
 .28
 .29
 .30
 .31
 .32
 .33
 .34
 .35
 .36
 .37
 .38
 .39
 .40
 .41
 .42
 .43
 .44
 .45
 .46
 .47
 .48

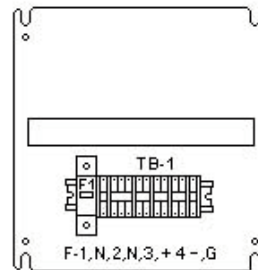
WIRING SCHEMATIC



EXTERIOR FRONT COMPONENT LAYOUT



INTERIOR SUB-PANEL COMPONENT LAYOUT



NAMEPLATE # 1 : " POWER - OFF / ON "

SYMBOL	DESCRIPTION	MANUFACTURER	PART #
ENCL-1	ENCLOSURE 10 X 8 X 6 / SUB PANEL	HAMMOND	PJ1086H / 14R0907
F-1	3 AMP FUSE / HOLDER	FERRAZ	TRM3 / USM11
SS-1	2 POS SELECTOR SWITCH / (2) 1 NO CONTACT BLOCK	GENERAL ELECTRIC	P9CSVD0N / P9B10VN
TB	TERMINAL BLOCK	ENTRELOC	VARIOUS
TC-1	TEMPERATURE CONTROL	WATLOW	PM6C1EJ-AAAAAAA
QA-1,2,3	QUENCH ARC	WATLOW	0804-0147-0000